

# ORIGINS

## WC300 • WATER CONDITIONER



### Treat Your Water – Take Care of Your Health

When your home uses hard, unconditioned water, undesirable elements, such as calcium, magnesium, chlorine, iron and sediment enter from wells or municipal water supplies. They take a toll on your plumbing, appliances, linens, glassware and more. And that takes a toll on your wallet. The solution is an Aerus Origins WC300 Water Conditioner. By supplying conditioned water throughout your home, it lets you enjoy the rich rewards of quality water. You can taste, see and feel the evidence of soft, conditioned water in your home.



A water conditioner is the only available option for eliminating hard water. Soft water allows showerheads to maintain luster and full flow, leaving you feeling cleaner. Clothes will rinse cleaner, feel softer and retain color longer. Soft water also reduces detergent and soap use and sinks, tubs, tile and fixtures will be easier to clean without the added residue or lime scum. These benefits add up and help to reduce energy costs and extend the life of your water heater and appliances.

**Volumetric Metering** – Most advanced metering technology, making it less expensive to operate

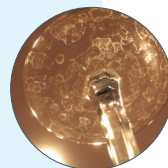
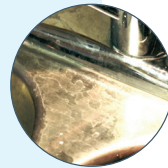
**Smart Thinking** – A full digital controller with large LCD display is in command through all stages of treatment, adjusting in response to changes in water usage

**Calendar Override** – Set to regenerate on specific dates

**Variable Reserve** – Reliably maintains up to a 28-day reserve

**Expert Efficiency** – Using a high-efficiency regeneration sequence allows your water softener to use less salt and water

**Top Notch Quality** – Components constructed of the best materials to withstand corrosion and wear



### Facts About Hard Water

- Hard water is water that contains a high concentration of minerals, such as magnesium and calcium
- Unconditioned water leaves unsightly stains and residue on sinks, tubs, tile and fixtures
- Undesirable mineral build-up can etch and stain kitchen sinks and granite countertops
- Magnesium consumes soap which can leave spots and residue on washed dishes and make freshly washed clothes look dingy
- Makes household chores more difficult and can even leave hair sticky and dull
- Can leave your towels scratchy and nonabsorbent and cause premature fabric failure
- Prevents soaps from lathering or rinsing well which leaves a residue on everything including skin and hair

**WORRY FREE**  
1-year limited warranty

## WC300 Features

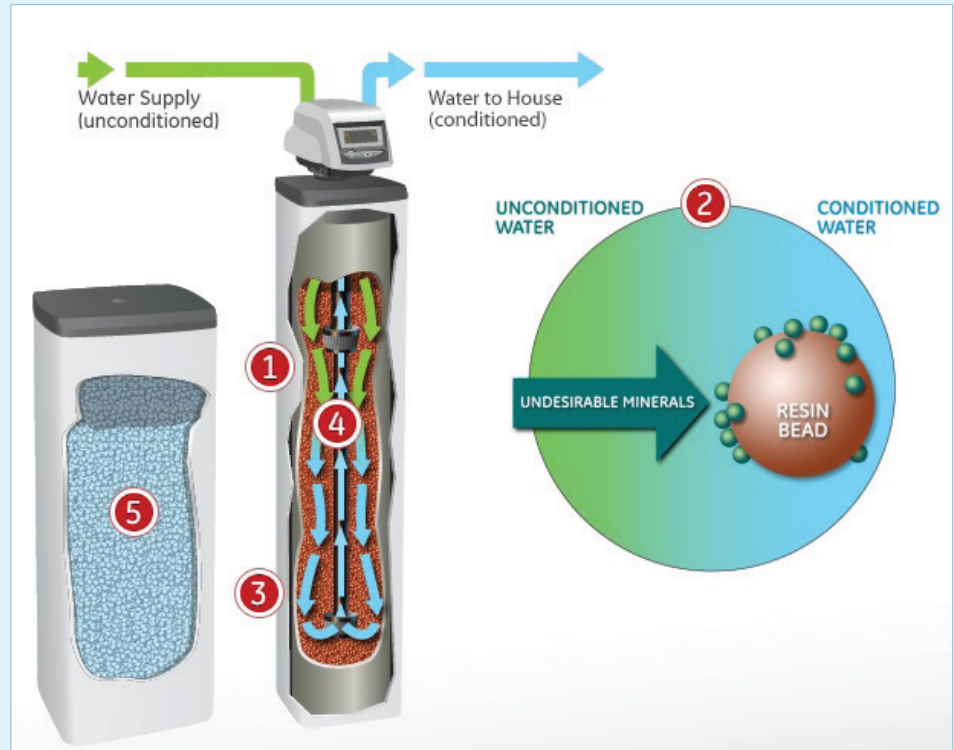
- Metered Demand Conditioner
- 268 / 760 Autotrol valve
- 10" x 54" tank – 1ft<sup>3</sup> 10% CL resin
- 14" x 14" x 50" brine tank
- Low 12 volt operation

# ORIGINS

WC300 • WATER CONDITIONER

## The Origins Water Conditioning Process

1. Unconditioned water passes through a bed of extremely small resin beads.
2. Undesirable minerals are drawn to the resin beads and attach to the surface.
3. Virtually all undesirable minerals are removed when the water reaches the bottom of the tank.
4. The conditioned water passes down through the riser tube and is distributed throughout the house.
5. Regenerant solution from the brine tank is used to recharge the resin beads.



The First Name in Healthy Homes<sup>®</sup>

From 1924 through the turn of the century, we were

Electrolux, the clear leader in home cleaning throughout North

America. Now, we're Aerus, a new name for a new generation of products and

services designed to help make your home a Healthy Home. All backed by

performance so legendary, over 99.8% of our customers

recommend Aerus to their friends and family.



Honored by the Smithsonian  
Trusted by Millions of Homes

We Offer Lifetime In-Home Service

**ELECTROLUX**<sup>®</sup>

Aerus. Your Original Manufacturer & Authorized Provider  
of Parts & Services for all 1924-2003 Electrolux Vacuums.

Name \_\_\_\_\_

Phone Number \_\_\_\_\_

Website \_\_\_\_\_